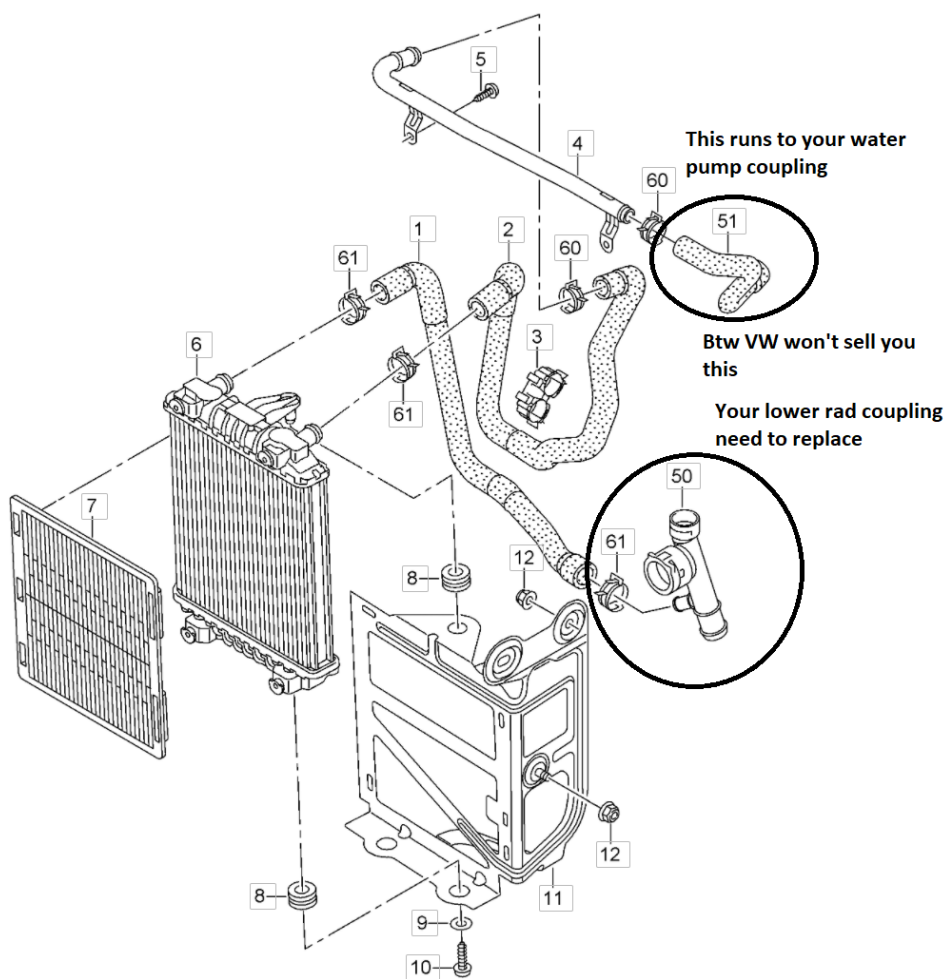
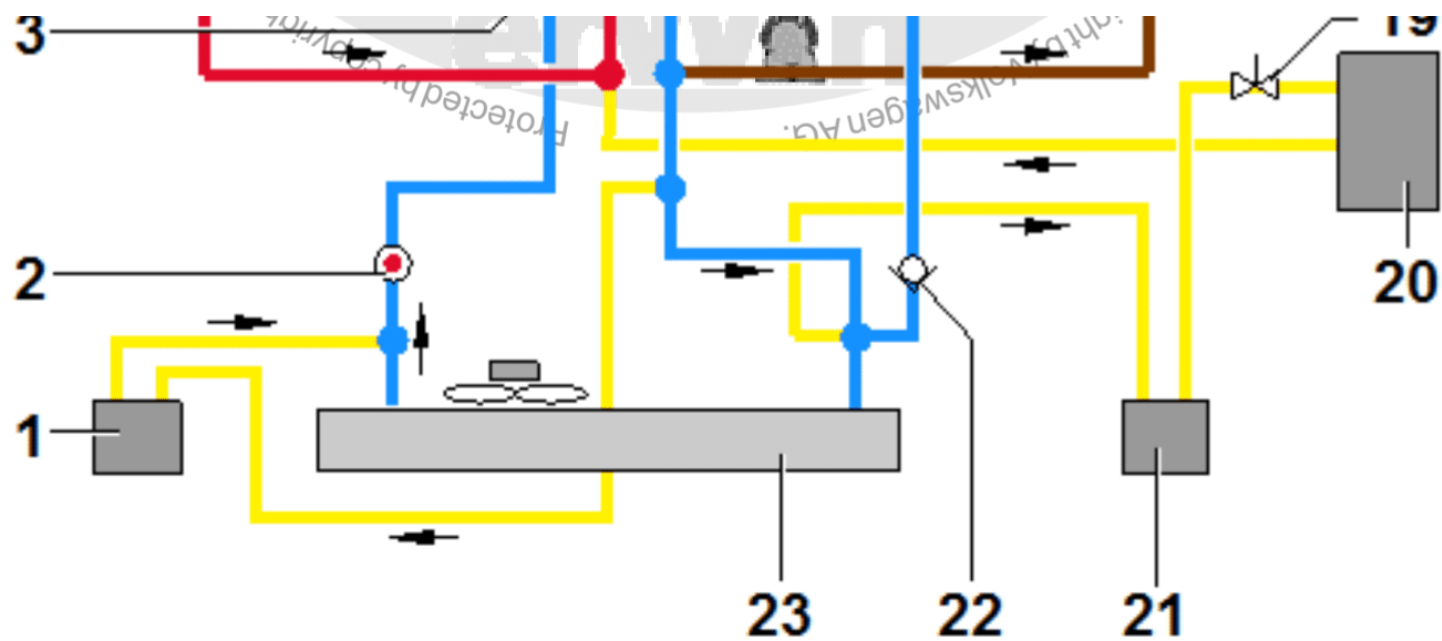


Right Side Aux Cooler #1

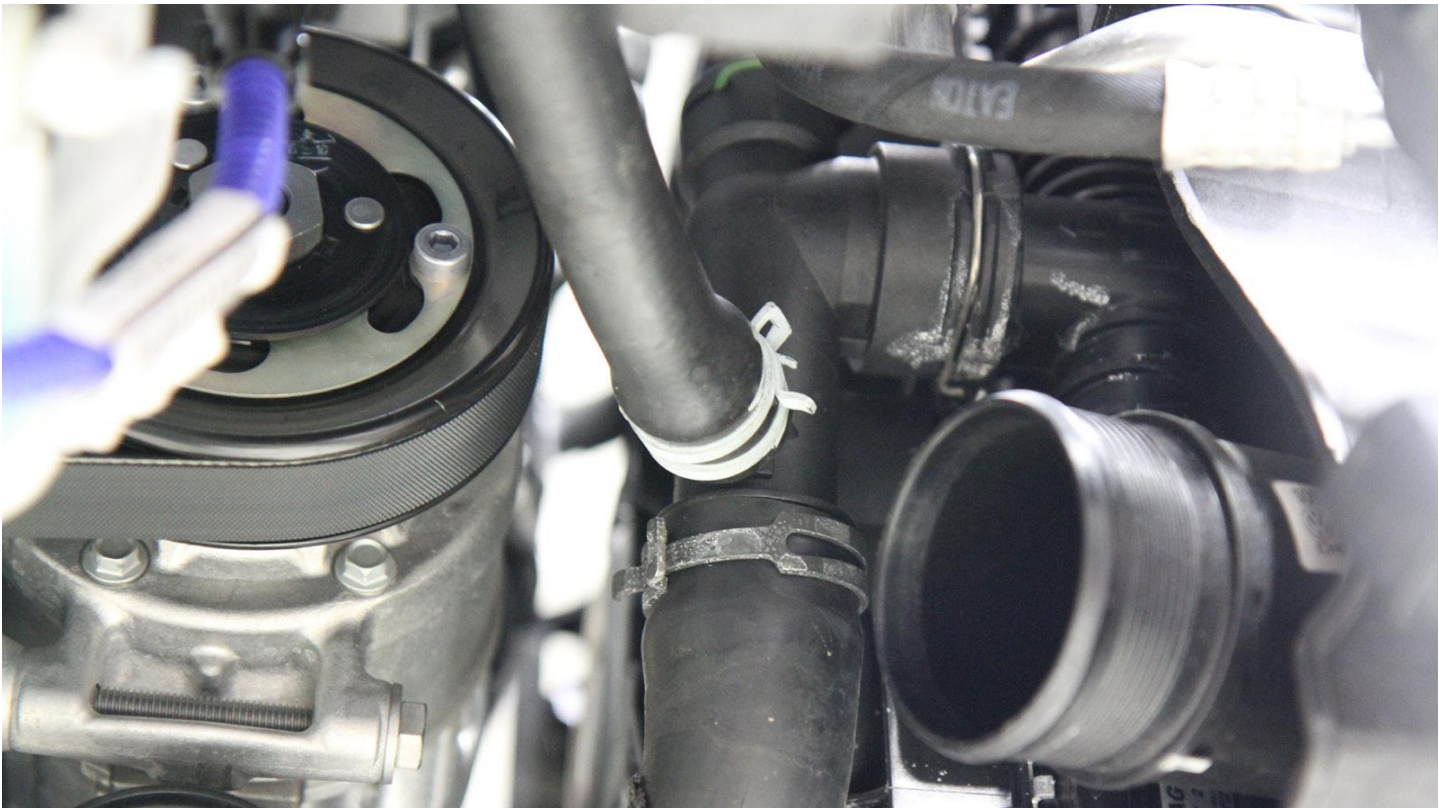


It is cheaper to buy the whole hose assembly vs. getting just the coupler





Lower Coolant Hose: 5Q0122051EG (#1) & connection to Hose 5Q0121051K (#21)





RHS Aux Cooler Mounting Bracket: 5Q0121093FD (#24)



Hose Separater Bracket: 5Q0121093BD (#27) & Rubber Grommets: 4D0317867A (#25)





RHS Aux Cooler Mounting Bracket: 5Q0121093FD (#24) Installed





CSF#8132 Auxilliary Radiator

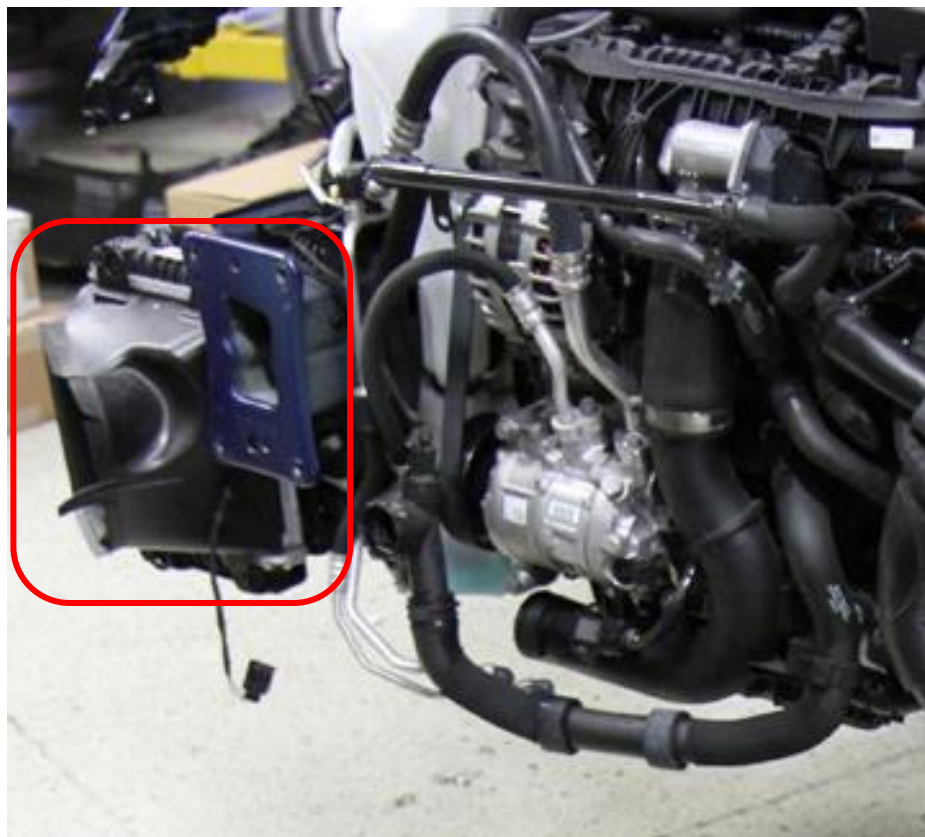




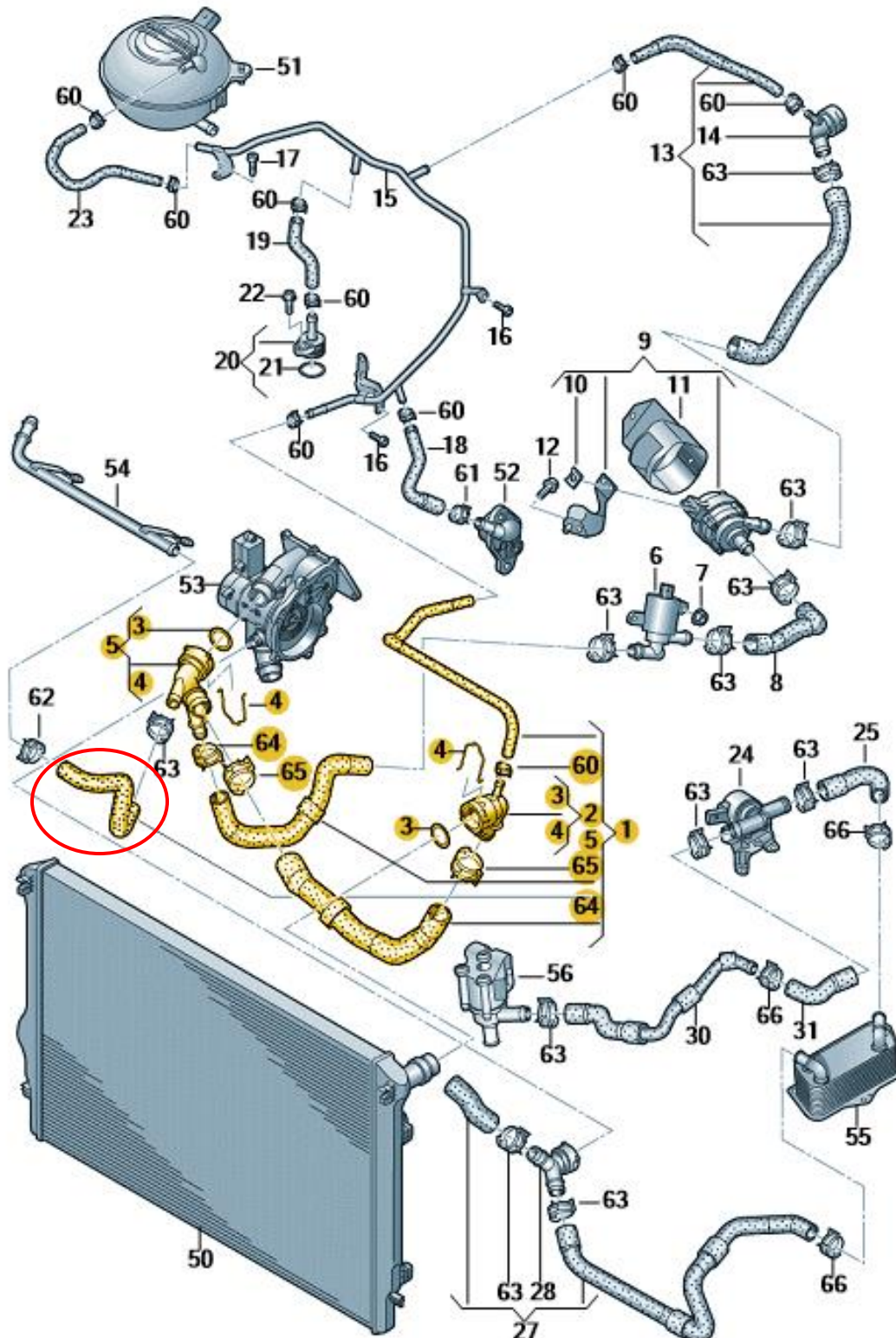
Basic hose layout



RHS Air Duct: 5G0117334 (#31)



Radiator Hose – Upper: 5Q0122101DR (#1) highlighted in yellow



Coolant hardline pipe #54 is the same as item #26 in the schematic above. The individual parts are not available individually from VW.

Unfortunately you need to purchase the whole upper hose assembly #1 to get the small gooseneck hose (circled in red) that connects the hardline pipe.

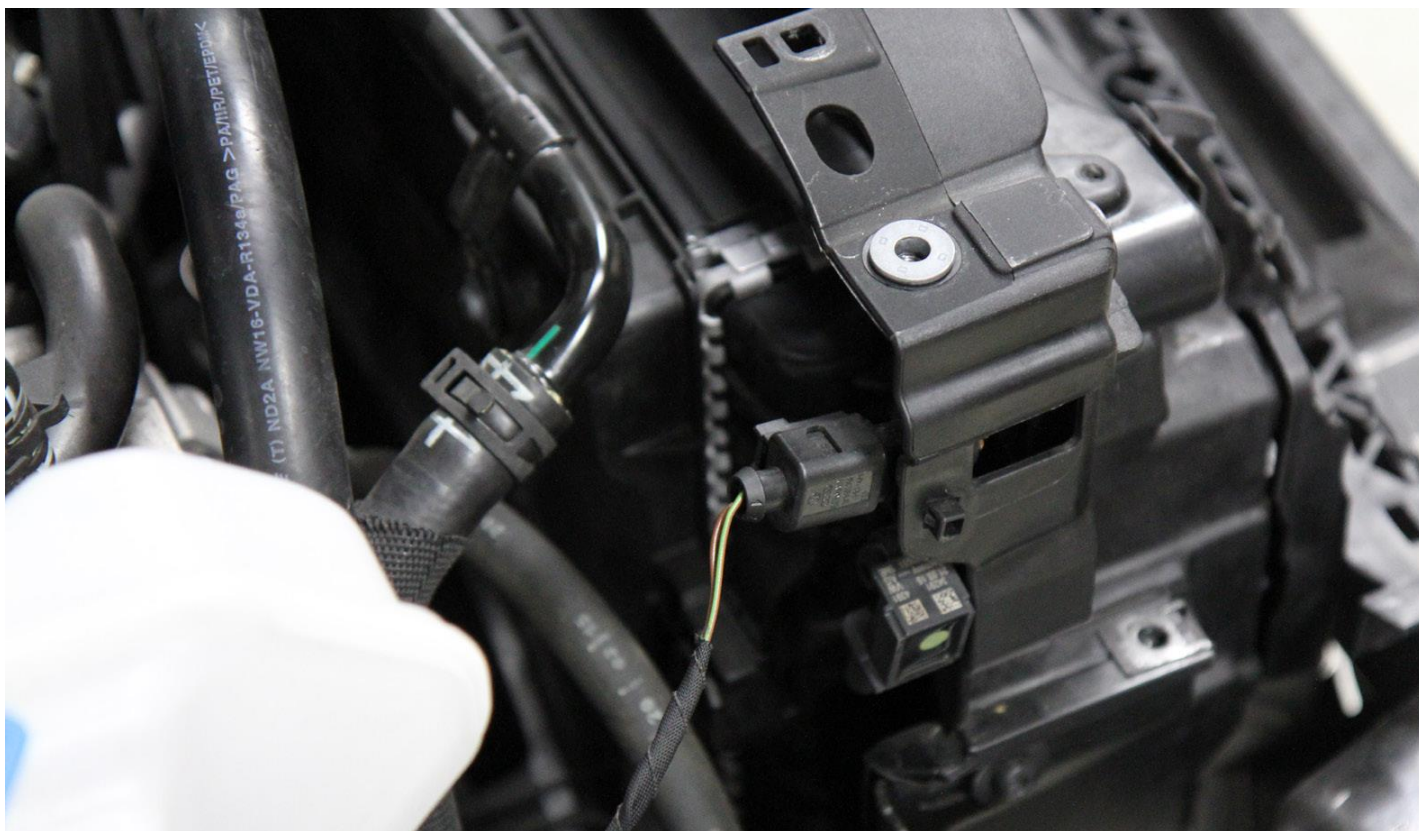


Coupler with the gooseneck connection to the hardline. It also makes for an easier connection to the water pump in tight quarters, using the wire clamp.





Coolant Pipe: 5Q0121070AP (#26) & Hose 5Q0121101N (#20)

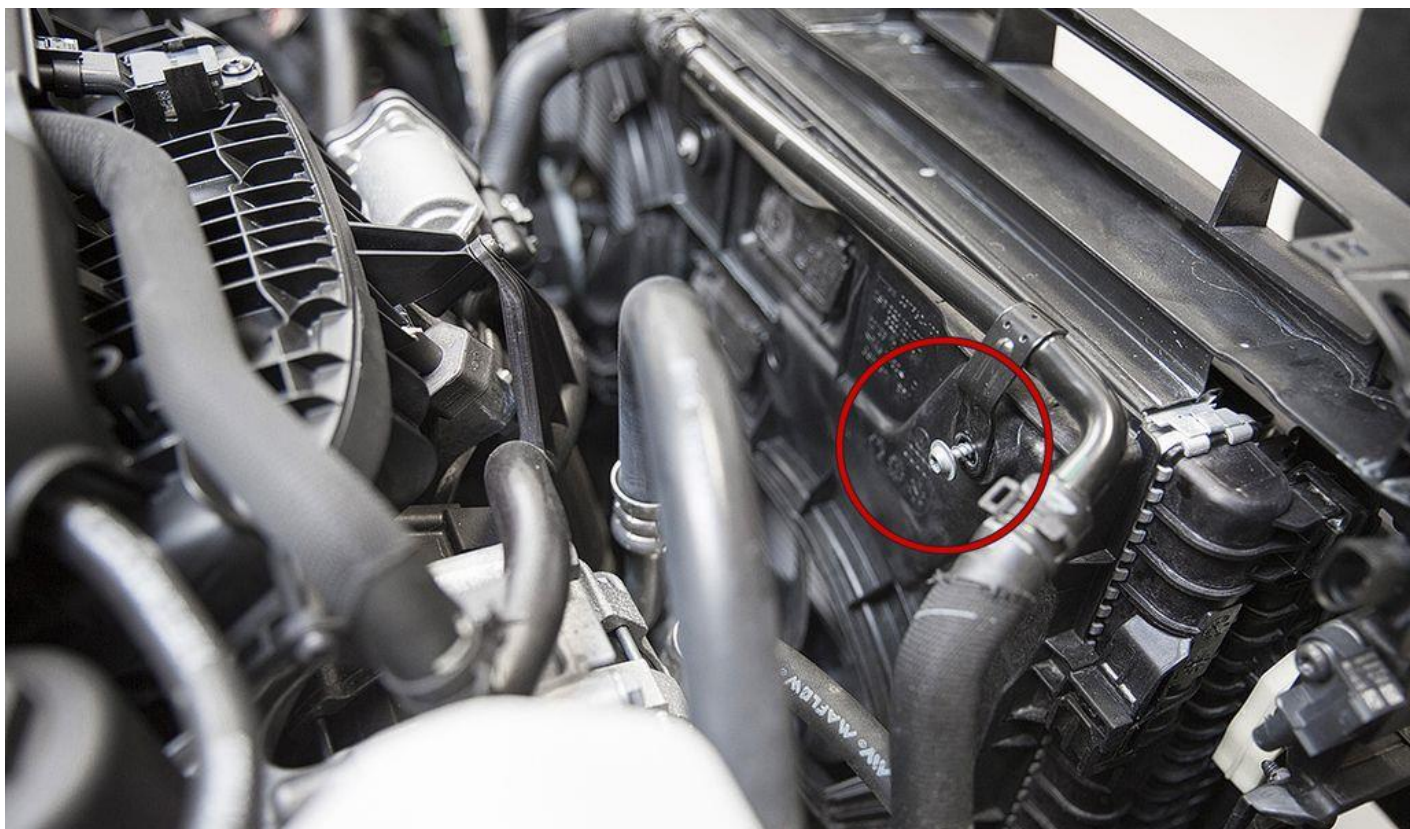


Coolant Pipe: 5Q0121070AP (#26) & clamp N90686902 (#61)

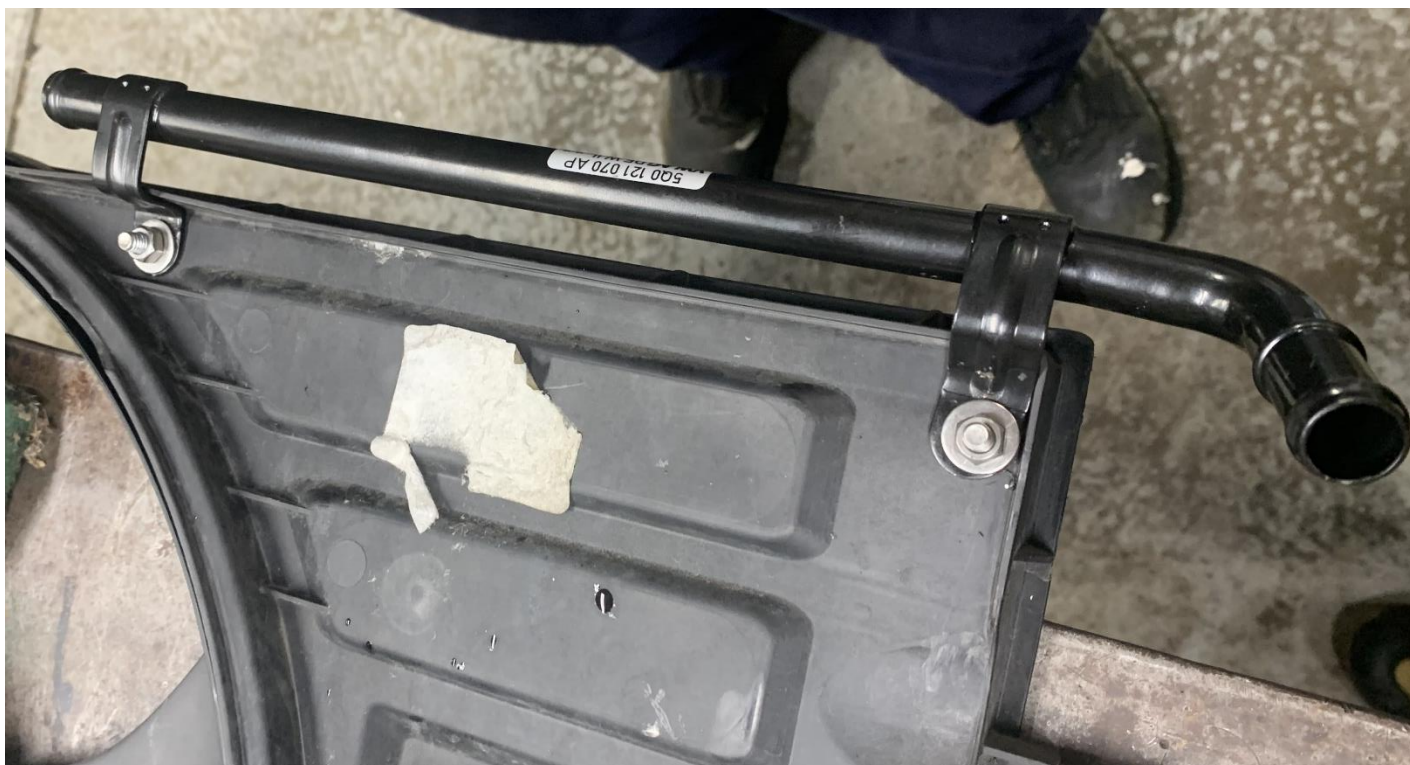




Coolant Pipe: 5Q0121070AP (#26) & screw N10471802 (#?)



Coolant Pipe: 5Q0121070AP (#26) Installed with stainless hardware



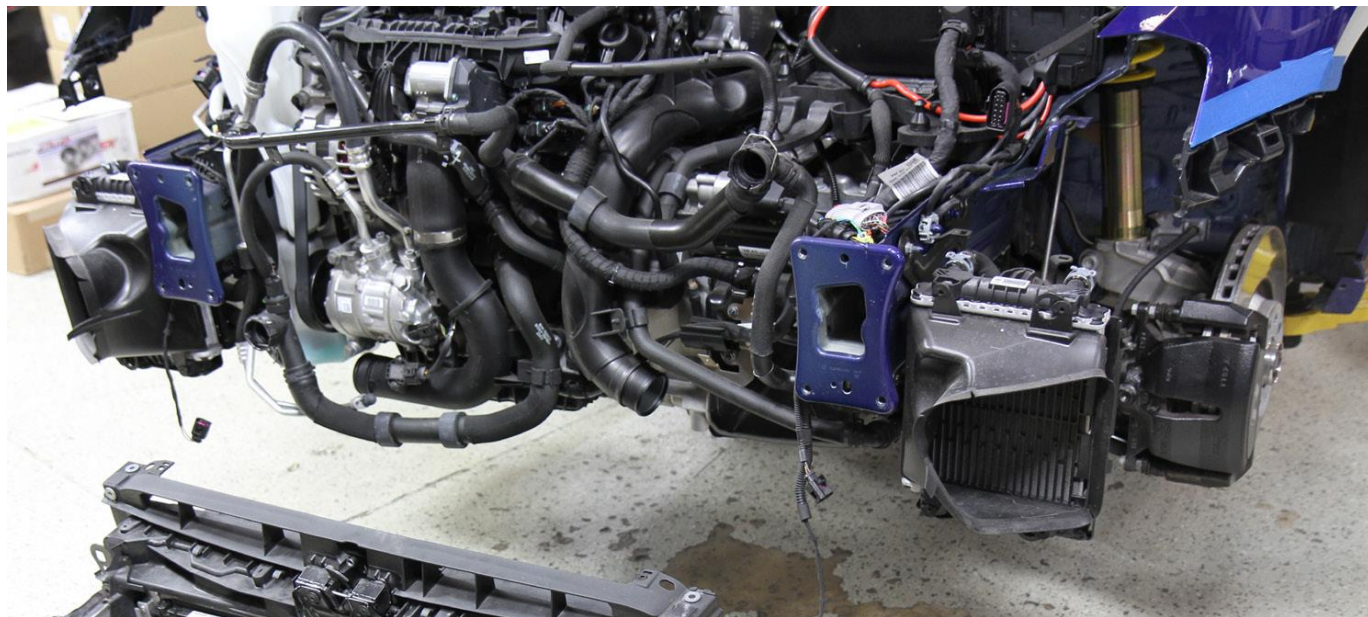


CSF #8132 Aux Cooler Installed with Air Duct 5G0-117-334 (#31)





This upper hose is for a DSG R. 6MT R's have a cooling duct instead of a aux DSG Cooler on the driver side. (These photos courtesy of AutoInstruct)





(Photos courtesy of AutoInstruct)





# PARTS LIST

Description	QTY	P/N#
RHS Aux Radiator	1	5Q0-121-251-HA
CSF AUX Radiator	1	CSF#8132
RHS Aux Radiator Mounting Bracket	1	5Q0-121-093-FD
RHS Air Duct	1	5G0-117-334
Hose Separator Bracket	1	5Q0-121-093-BD
Rubber Mounting Bushing (x3)	3	4D0-317-867-A
Washer (x2)	2	N-902-259-01
Screw for hard line (x2)	2	N-104-718-02
Nuts for Bracket	3	N-907-611-03
Hose from Radiator to Hard Line	1	5Q0-121-101-N
Hose from Aux Rad to Main Rad	1	5Q0-121-051-K
Lower Radiator Hose (incl. COUPLER & COOLING SENSOR)	1	5Q0-122-051-EG
Upper Coolant Hose (incl. SHORT ELBOW HOSE & COUPLER)	1	5Q0-122-101-DR
Clamps	3	N-906-870-01
Clamps for Hardline connections	2	N-906-860-02
Hard Pipe	1	5Q0-121-070-AP